

# Haerlemmerdijk

Stg. Kempische Muziek en Dans

C instrment

Trad.

## Intro



B $\flat$

C

F

$\text{♩} = 165$



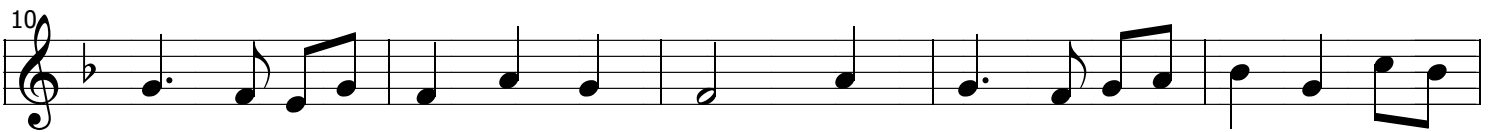
F

Dm

C

F

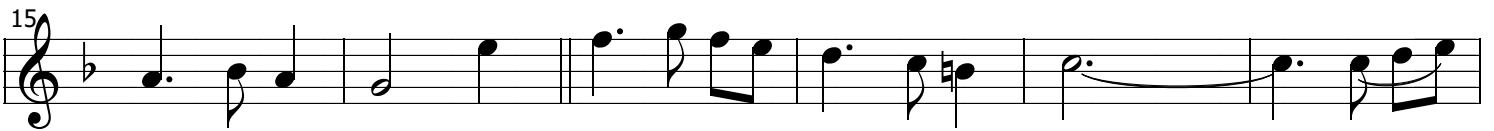
B $\flat$



C

F

C<sup>7</sup>



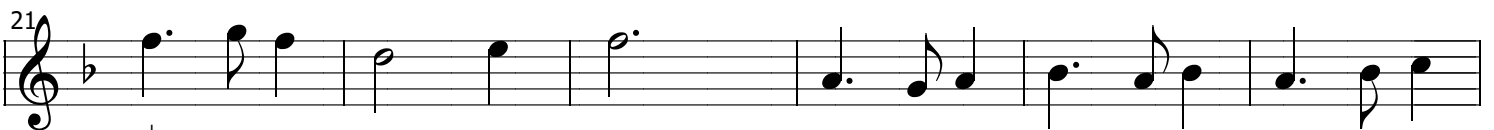
F

C

Dm

G

C



B $\flat$

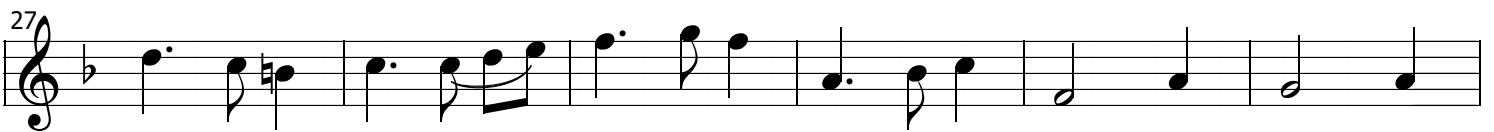
F

C<sup>7</sup>

F

Gm

D



G

C

F

Dm

C



B $\flat$

C

F

F

1.,3.

4.